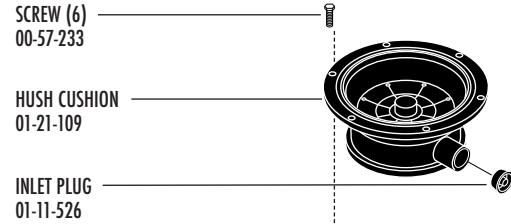


# Waste King

COMMERCIAL

by Anaheim Manufacturing

PHONE: (800) 854-3229 • FAX: (800) 454-4406  
www.wasteking.com



SCREW (6)  
00-57-233

HUSH CUSHION  
01-21-109

INLET PLUG  
01-11-526

CUSHION CLAMP RING  
00-55-090

NUT (6) 479C015P03

SCREW (8) 09-01-074

HOUSING CLAMP RING (2)  
01-21-111

NUT (8) 479C015P03

HOUSING SCREW (6)  
09-01-117

UPPER HOUSING  
01-21-181

LOCK WASHER (6)  
09-01-023

NUT (6)  
09-00-532

GRIND RING GASKET  
00-27-079

GRIND RING  
01-11-529

ADAPTER GASKET  
00-27-018

TABLE LOCK KIT  
00-99-004

L.H. SCREW  
01-22-060

LOCKWASHER  
01-22-059

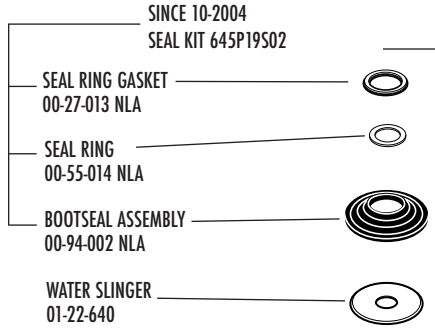
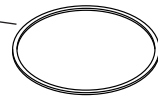
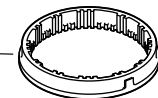
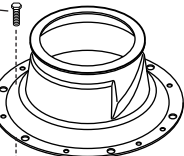
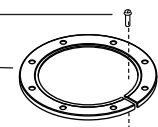
### TURNTABLE ASSEMBLY 00-97-197

(One cutter blade. Impellers are included, but are not sold separately.)

CUTTER BLADE KIT  
00-80-067

GRIND RING  
ADAPTER  
00-00-019

HOUSING GASKET  
00-27-020



SINCE 10-2004  
SEAL KIT 645P19S02

SEAL RING GASKET  
00-27-013 NLA

SEAL RING  
00-55-014 NLA

BOOTSEAL ASSEMBLY  
00-94-002 NLA

WATER SLINGER  
01-22-640

### SEAL KIT 00-94-014

IF YOUR UNIT HAS A SERIAL NUMBER  
STARTING WITH JANUARY 2004 USE  
SEAL 00-94-073

SPACER 01-21-588

### MOTOR ASSEMBLY 463P010S11

RETAINING RING\*  
612P030P01

UPPER BEARING\*  
042P020P02

\*Included with  
Motor Housing

MOTOR HOUSING  
311P094S01

### JUNCTION BOX ASSEMBLY 069P002S01 069P003S01\*\*

(Protector Assy. not included)

JUNCTION BOX GASKET  
269P057P01  
269P066P01\*\*

ROTATING SWITCH  
695P036P01

RETAINING RING  
612P029P01

LOWER BEARING  
042P020P01

SPRING  
675P026P01

STATIONARY SWITCH  
695P034P01

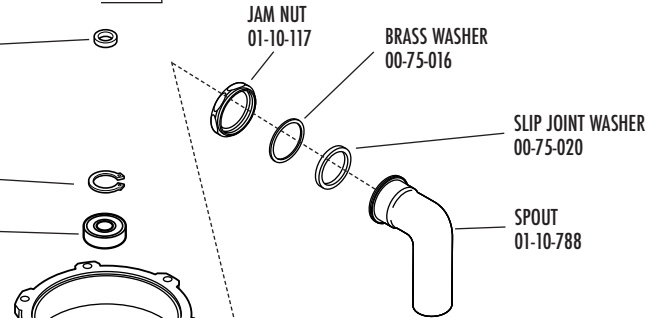
END SHIELD  
311P097P01

FAN  
239P001P01

FAN RETAINING RING  
612P028P01

FAN COVER  
183P002P01

SCREW (3)  
636P038P01

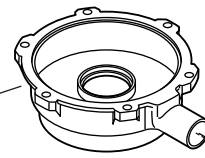


JAM NUT  
01-10-117

BRASS WASHER  
00-75-016

SLIP JOINT WASHER  
00-75-020

SPOUT  
01-10-788



COVER  
183P003P01  
174P075P01\*\*  
269P065P01\*\*

JUNCTION BOX  
SCREWS (6)  
636P038P02



JUNCTION BOX  
069P002P01  
069P003P01\*\*

GROUND SCREW  
636P039P01

PROTECTOR  
BOOT  
269P055P01

PROTECTOR  
GASKET  
269P058P01

SCREW (2)  
636P040P01  
636P040P02\*\*

SEALING  
WASHER (2)  
792P009P01

LOCKWASHER(2)  
792P010P01

### PROTECTOR ASSEMBLY 166P008S01

JUNCTION BOX GASKET  
269P057P01  
269P066P01\*\*

MOUNTING  
SPACER (2)  
694P013P01

PROTECTOR  
166P008P01

### PROTECTOR ASSEMBLY 166P008S01

SCREW (2)  
636P038P01

CAPACITOR COVER  
183P004P01

CAPACITOR GASKET  
269P059P01

CAPACITOR  
122P005P01

