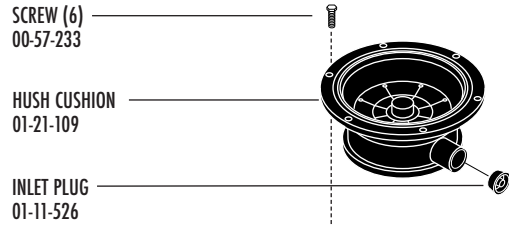


Waste King

COMMERCIAL

by Anaheim Manufacturing

PHONE: (800) 854-3229 • FAX: (800) 454-4406
www.wasteking.com



SCREW (6)
00-57-233

HUSH CUSHION
01-21-109

INLET PLUG
01-11-526



CUSHION CLAMP RING
00-55-090

NUT (6) 479C015P03

SCREW (8) 09-01-074

HOUSING CLAMP RING (2)
01-21-111

NUT (8) 479C015P03

HOUSING SCREW (6)
09-01-117

UPPER HOUSING
01-21-180

LOCK WASHER (6)
09-01-023

NUT (6)
09-00-532

GRIND RING GASKET
00-27-091

GRIND RING
00-55-151

HOUSING GASKET
00-27-020

**TABLE LOCK KIT
00-99-004**

L.H. SCREW
01-22-060

LOCKWASHER
01-22-059

**TURNTABLE ASSEMBLY
01-22-668**

CUTTER BLADE KIT (1)
00-80-178

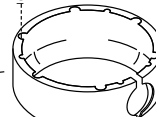
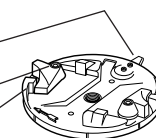
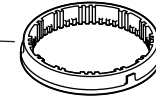
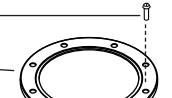
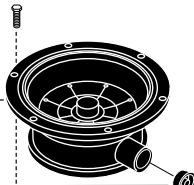
IMPELLER KIT (2)
00-86-545

IMPELLER BUSHING (2)
00-07-873

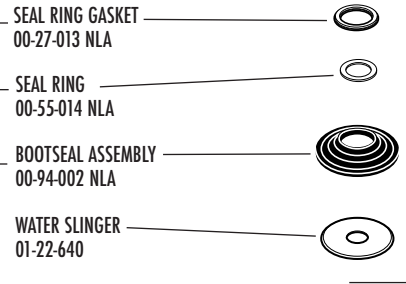
COVER STRIP
01-21-601

SCREW (4)
09-01-470

BAFFLE
01-21-533



SINCE 10-2004
SEAL KIT 645P19S02



SEAL RING GASKET
00-27-013 NLA

SEAL RING
00-55-014 NLA

BOOTSEAL ASSEMBLY
00-94-002 NLA

WATER SLINGER
01-22-640

**SEAL KIT
00-94-014**

IF YOUR UNIT HAS A SERIAL NUMBER
STARTING WITH JANUARY 2004 USE
SEAL 00-94-073

SPACER 01-21-588

**MOTOR ASSEMBLY
463P010S13**

* RETAINING RING
612P030P01

* UPPER BEARING
042P020P02
(* Included with
Motor Housing)

MOTOR HOUSING
311P094S01

**JUNCTION BOX ASSEMBLY
069P002S01
069P003S01****

(Protector Assy. not included)

JUNCTION BOX GASKET
269P057P01
269P066P01**

ROTATING SWITCH
695P036P01

RETAINING RING
612P029P01

LOWER BEARING
042P020P01

SPRING
675P026P01

STATIONARY SWITCH
695P034P01
(re-use screw)

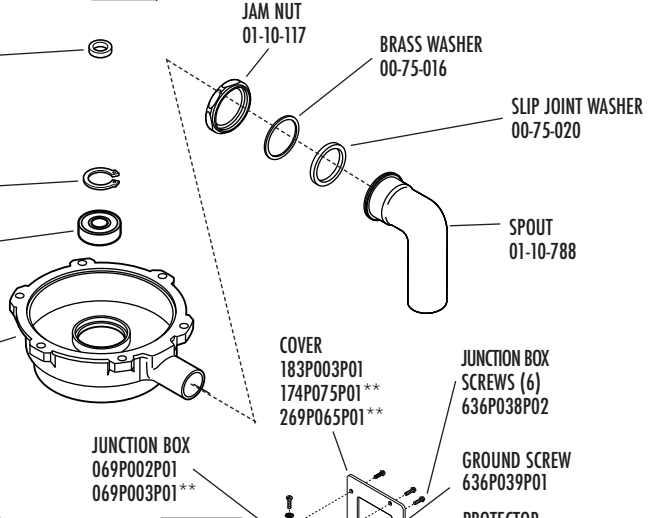
END SHIELD
311P097P01

FAN
239P001P01

FAN RETAINING RING
612P028P01

FAN COVER
183P002P01

SCREW (3)
636P038P01



JAM NUT
01-10-117

BRASS WASHER
00-75-016

SLIP JOINT WASHER
00-75-020

SPOUT
01-10-788

COVER
183P003P01
174P075P01**
269P065P01**

JUNCTION BOX
SCREWS (6)
636P038P02

GROUND SCREW
636P039P01

PROTECTOR
BOOT
269P055P01

PROTECTOR
GASKET
269P058P01

SCREW (2)
636P040P01
636P040P02**

SEALING
WASHER (2)
792P009P01

LOCKWASHER (2)
792P010P01

JUNCTION BOX
069P002P01
069P003P01**

MOUNTING
SPACER (2)
694P013P01

PROTECTOR
166P008P02

**PROTECTOR ASSEMBLY
166P008S02**

START CAPACITOR
122P005P04

CAPACITOR COVER
183P005P01

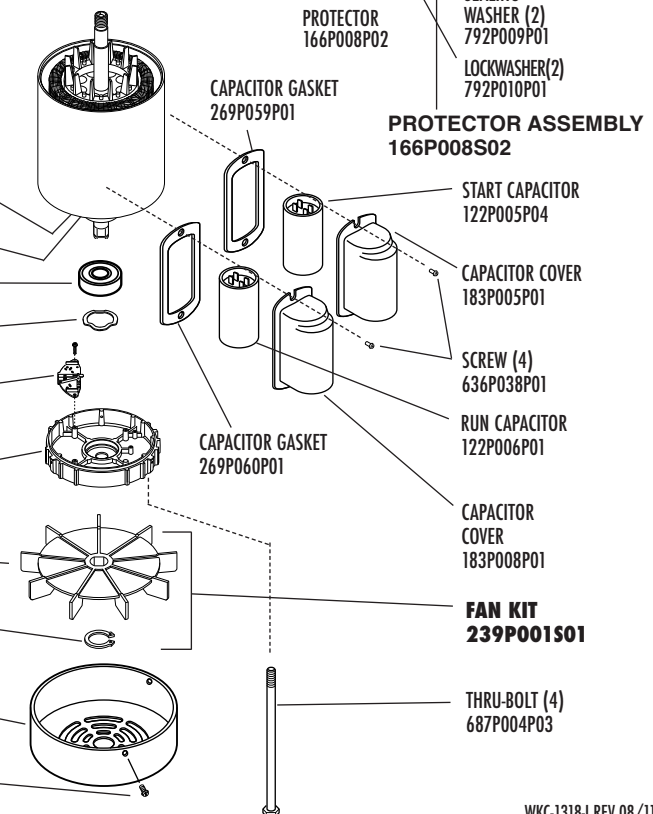
SCREW (4)
636P038P01

RUN CAPACITOR
122P006P01

CAPACITOR
COVER
183P008P01

**FAN KIT
239P001S01**

THRU-BOLT (4)
687P004P03



CAPACITOR GASKET
269P059P01

CAPACITOR GASKET
269P060P01

Waste King

COMMERCIAL

by Anaheim Manufacturing

PHONE: (800) 854-3229 • FAX: (800) 454-4406
www.wasteking.com

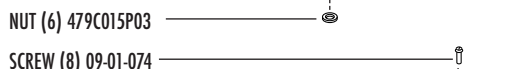
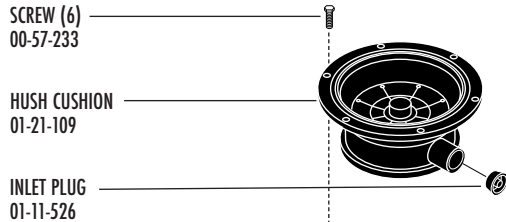
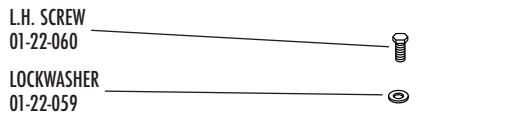
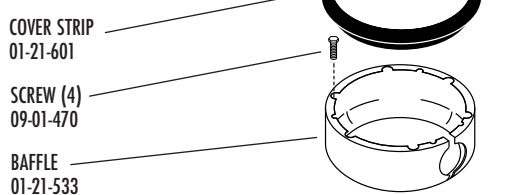


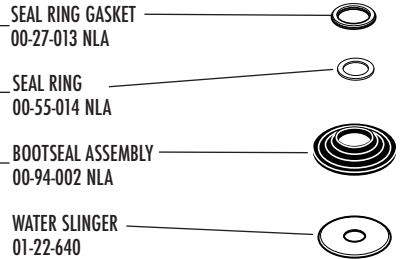
TABLE LOCK KIT 00-99-004



TURNTABLE ASSEMBLY 01-22-668



SINCE 10-2004
SEAL KIT 645P19S02

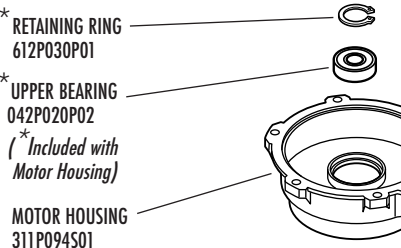


SEAL KIT 00-94-014

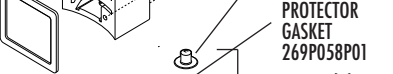
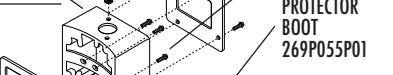
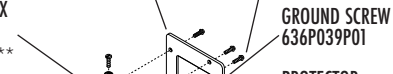
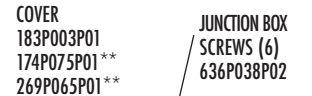
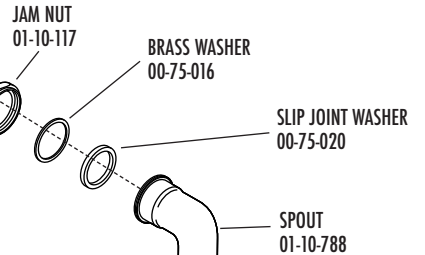
IF YOUR UNIT HAS A SERIAL NUMBER
STARTING WITH JANUARY 2004 USE
SEAL 00-94-073



MOTOR ASSEMBLY 463P010S33



JUNCTION BOX ASSEMBLY 069P002S01 069P003S01** (* Protector Assy. not included)



PROTECTOR ASSEMBLY 166P008S32



NUMBERED PARTS AVAILABLE SEPARATELY

**For stamped steel box effective